



Push handles

Ergonomically shaped, durable, non-sliding rubber grips.



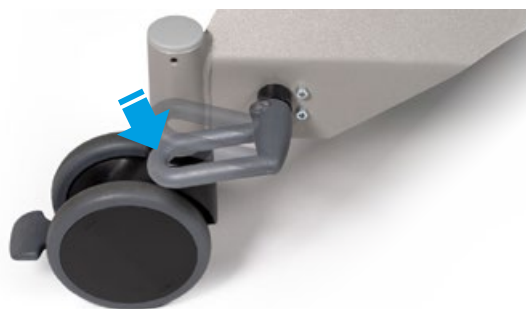
Technical dimensions

Back part/leg part



Foot release/double castors

Infinitely adjustable back, leg part and seat adjustment via gas pressure spring with foot release. Castor brakes on the left and right 360-degree rotating castors hold the chair safely in place.



Technical specifications

Chassis

• Laser frame profile	5 mm
• Chassis length	1,000 mm
• Width incl. wheels	650 mm
• Width incl. armrest	680 mm
• Wheel/castors diameter	ø 300/125 mm

Lifting column

	Angle	Dimensions (LxW)
• Back part	+80°	830 x 510 mm
• Seat part	+30°	530 x 510 mm
• Leg part	-82°	380 x 510 mm
• Upholstery height		50/90 mm
• Total length		1,750 mm
• Armrests	0°/+180°	height 810 mm
• Entry height		610 mm
• Chair height max.		1,360 mm

Max. load 135 kg

Weight 56 kg

Subject to technical modifications.

Standard color

anthracite **Item No.:** 3037 0052

You can find additional colors on the color card „skai® Tundra“ on page 93

