



SURGICAL CHAIRS & TABLES FOR EYE- & MICROSURGERY

PRODUCT GUIDE 2026



TRANSPORT AND RELAXING CHAIR

motionLine

Transport and relaxing chair

motionLine



Item No.: 1700 0000

The ergonomic transport and relaxing chair for extra patient comfort and wellness flair.

With many practical details for patients and caregivers: Low entry height, synchronously adjustable resting position, comfortable bolster and lumbar support, comfortable push handles and hanging basket for patient property.



Maximum patient comfort

Headrest

Flexible, height-adjustable neck support cushion for enhanced patient comfort.



Armrests

Hinged and removable armrests for easy entry and exit as well as transfer of the patient.



Insert basket

Practical storage basket for patient medical records and belongings.





Push handles

Ergonomically shaped, durable, non-sliding rubber grips.



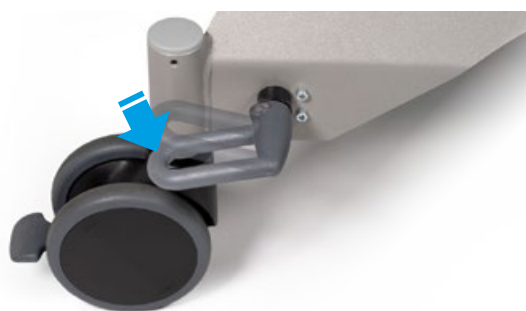
Technical dimensions

Back part/leg part



Foot release/double castors

Infinitely adjustable back, leg part and seat adjustment via gas pressure spring with foot release. Castor brakes on the left and right 360-degree rotating castors hold the chair safely in place.



Technical specifications

Chassis

• Laser frame profile	5 mm
• Chassis length	1,000 mm
• Width incl. wheels	650 mm
• Width incl. armrest	680 mm
• Wheel/castors diameter	ø 300/125 mm

Lifting column

	Angle	Dimensions (LxW)
• Back part	+80°	830 x 510 mm
• Seat part	+30°	530 x 510 mm
• Leg part	-82°	380 x 510 mm
• Upholstery height		50/90 mm
• Total length		1,750 mm
• Armrests	0°/+180°	height 810 mm
• Entry height		610 mm
• Chair height max.		1,360 mm

Max. load 135 kg

Weight 56 kg

Subject to technical modifications.

Standard color

anthracite **Item No.:** 3037 0052

You can find additional colors on the color card „skai® Tundra“ on page 93



Components



motionLine
Item No.: 1700 0000



I.V. Pole stainless steel
Ø 25/18 mm, one-hand
height adjustable 1,070 –
1,660 mm, 4 hooks, max.
2 kg/hook, glass and holder
(adapter 3082 0000 not
included)

Item No.: 3068 0000



Instrument table
300x200x13 mm,
swiveling, detachable,
incl. adapter

Item No.: 3329 0000



Adapter

Item No.: 3082 0000



Foot protection foil

Item No.: 3319 0000



Color card

skai® Tundra



High quality skai® material with fine calf leather grain and subdued matte-gloss-effect. The very extensive and trend-orientated color spectrum enables many applications and combinations.

Product Specification

- Long-lasting
- Tear resistant
- Easy to clean
- Abrasion resistant (DIN EN ISO 5470-2)
- Lightfast
- Disinfectant resistant
- Biocompatibility: cytotoxicity (EN ISO 10 993-5) and epicutaneous test (EN ISO 10 993-10)
- Blood- and urine resistant
- Phthalate-free
- Vegan

<i>eyeForce</i>	1800 0000
<i>500 XLE</i>	1500 0006
<i>500 XLE comfort</i>	1500 0006
	+ 3037 0080
<i>500 XLS</i>	1500 0005
<i>500 ECO</i>	1500 0008
<i>400 XL</i>	1400 0001
<i>surgiForce</i>	Formed seat 2600 0008
<i>surgiForce light</i>	Formed seat 2600 0009
<i>surgiLine</i>	Formed seat 2200 0008
<i>assistLine</i>	2400 0015
<i>motionLine</i>	1700 0000

+ Item No.: 3037 0...

weiß F6461198 Item No.:134	creme F6461210 Item No.:057	beige F6461636 Item No.:094	sand F6461230 Item No.:058	pistazio F6461610 Item No.:153	mint F6461495 Item No.:067	aqua F6461456 Item No.:001	türkis F6461338 Item No.:008
perle F6461288 Item No.:007	silber F6461550 Item No.:070	stone F6461608 Item No.:075	bleu F6461496 Item No.:068	dolphin F6461609 Item No.:076	sky F6461581 Item No.:073	royal F6461196 Item No.:051	atoll F6461453 Item No.:062
violett F6461356 Item No.:059	cyclame F6461381 Item No.:119	orchidee F6461354 Item No.:011	bordeaux F6461350 Item No.:010	kirsche F6461199 Item No.:054	feuer F6461454 Item No.:063	karneol F6461557 Item No.:072	orange F6461556 Item No.:071
apricot F6461458 Item No.:066	mais F6461457 Item No.:065	mango F6461607 Item No.:074	safran F6461542 Item No.:069	limonade F6461343 Item No.:009	limone F6461543 Item No.:109	smaragd F6461455 Item No.:064	agave F6461273 Item No.:006
chrom F6461205 Item No.:056	ocean F6461204 Item No.:055	schoko F6461357 Item No.:060	schwarz F6461195 Item No.:050	anthrazit F6461197 Item No.:052			

The colors displayed on your device may differ slightly from the original colors. If you wish to receive original color charts, please contact us at info@ufsk-osys.com.

Upgrade your OR to perfection.



eyeForce



500 XLE



500 XLE comfort



500 XLS



500 ECO



400 XL



motionLine



surgiForce



surgiForce light



surgiTrend



surgiLine



stayClean



stayClean roll



stayClean kick bucket



stayClean collector



assistTrend



assistPro F



assistPro H



easyPro F



easyLine F



easyLine R



assistLine



supportLine



CONTACT US

UFSK-International OSYS GmbH
Kirchhoffstraße 1
93055 Regensburg
Germany

Tel. +49 (0) 941 78862 15
Fax +49 (0) 941 78862 35
E-Mail info@ufsk-osys.com
Web ufsk-osys.com

MADE IN GERMANY
Design | Construction | Manufacturing