



SURGICAL CHAIRS & TABLES FOR EYE- & MICROSURGERY

PRODUCT GUIDE 2026



TREATMENT CHAIR

500 ECO

functionalClass

500 ECO



Item No.: 1500 0008

Perfect for IVI treatments. Direct power connection and the integrated power supply unit enable the more powerful operation with high adjustment speed.



WITH PRODUCT UPGRADES

The back section, which is **shorter in height and shoulder width**, and the head section, which has been **adapted to the new shape**, ensure better patient positioning and ergonomic access to the surgical field. (Illustration compared to the previous version in blue).

DIRECT POWER CONNECTION



Positioning

Efficient, comfortable and fast!



Entering



Patient positioning



5 - 6 SEC
IN OR-POSITION

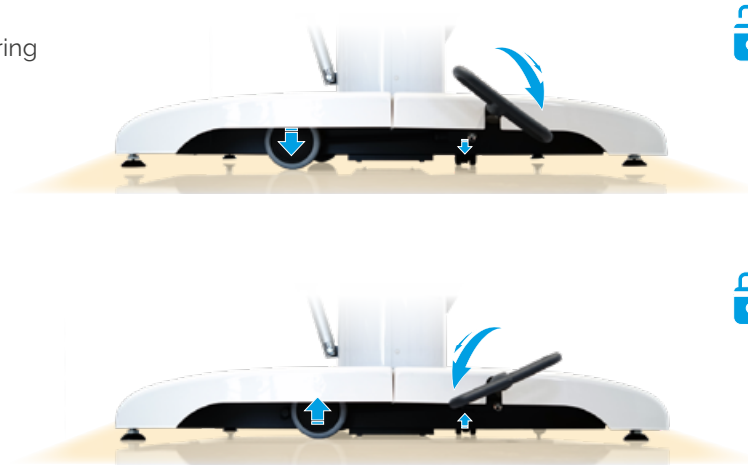
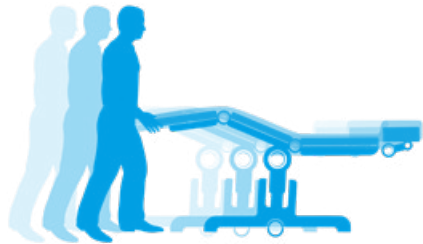


Surgery position

Sturdy base with mono lifting column

Stability/maneuvering aid

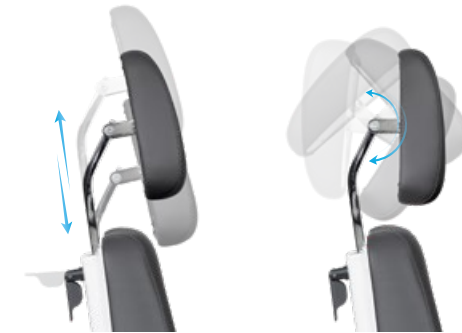
Sturdy stand with three extendable castors combines high stability with simple maneuvering aid (in the event of a change of a location).



Precise positioning of the head part





Headrest

Mechanical adjustment options for comfortable and fine-tuned positioning of the patient's head, adapted to his individual body dimensions.



Positioning by hand control

Multi-functional manual keypad

-  Reset button
-  CPR button
-  Auto run function
-  8 free configurable memory positions



Positioning via optional foot controls

Small and compact

Optional foot keypad to activate the two free configurable memory positions 1 and 2 of hand control.

Item No.: 3351 1029



More adjustment options

NEW

Optional multifunctional foot keypad for individual adjustment of backrest, seat, and overall height, with three memory positions, on/off, and reset button.

Item No.: 3351 1053



Technical specifications

Chassis

- Outside length 910 mm
- Outside width incl. foot pedal 600 mm
- Outside width incl. arm rests 830 mm
- White paint finish
- 2 fixed castors (rigid) \varnothing 100 mm
- 1 swivel castor \varnothing 35 mm
- Optional: foot keypad

Upper frame

- 4-part support frame (head, back, seat, leg part)
 - Length 1,905 – 2,120 mm
 - Width of upholstery 610 mm
 - Entry height (in reset position) 550 mm
 - Removeable upholstery
- | | Angle | Dimensions (LxW) |
|---------------------|------------|---------------------------|
| • Head part | -39°/+180° | 265 x 295 mm |
| • Back part | 0°/+83° | 610 x 610 mm |
| • Seat part | -3°/+28° | 510 x 600 mm |
| • Leg part | 0°/-75° | 490 x 530 mm |
| • Height adjustment | | 615 – 890 mm |
| • Armrests | 0°/+180° | 455 x 75 mm |
| • Legroom surgeon | | 485 – 760 mm |
| • CPR/flatposition | | (height back part) 600 mm |

Electrical control

- All components according to IP54
- Hand control with 8 individually programmable memory positions, auto run function, reset button
- Foot keypad (optional) with two memory positions
- Multifunctional foot keypad (optional) for back, seat and height adjustment, including on-off button, three memory positions, reset button

Electric Drives

- Back, seat, leg part, total up/down

Lifting column

- Max. lifting 275 mm
- Max. load 240 kg
- Motors IPX4 with HAL sensors, to be memorized

Seat part/CPR



Back part/leg part



Height adjustment/legroom



Specifications in mm

Further technical details

- Chair has detachable, swiveling armrests made completely with PUR foam
- Detachable seat for service friendly access to electric components

Max. load 240 kg

Weight 82 kg

Subject to technical modifications.



Application example

assistTrend
+ armrest pair

Item No.: 2500 0002
+ Item No.: 3300 0000

500 ECO

Item No.: 1500 0008

Equipment protection

Paper rolls *stayClean roll*

White embossed, 2-ply, 50 cm x 50 m,
carton à 9 pieces

Item No.: 3034 0021

See page 100



Upholstery/color card

Standard color

anthracite Item No.: 3037 0052

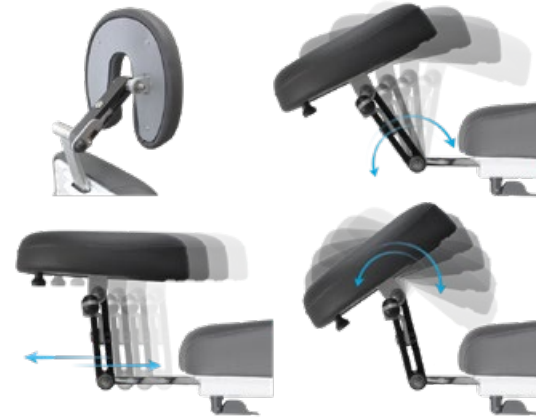
You can find additional colors on the color card „skai®Tundra“ on page 93



Components



500 ECO
Item No.: 1500 0008



Multifunctional headrest

Item No.: 3351 1034



Paper roll holder

Item No.: 3351 1056



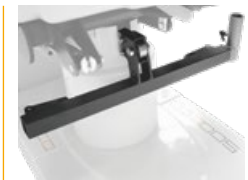
Foot keypad to activate the two free configurable memory positions 1 and 2 of hand control

Item No.: 3351 1029



Multifunctional foot keypad to activate the back, seat and height adjustment, including on-off button, three memory positions, and a reset key

Item No.: 3351 1053



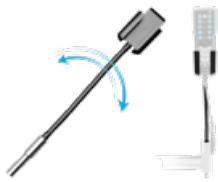
Component mounting support, powder coated with component holder stainless steel

Item No.: 3351 1033



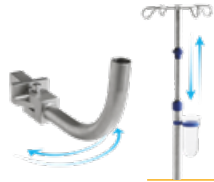
Component holder, stainless steel (component mounting support 3351 1033 not included)

Item No.: 3351 0037



Hand control holder, PVC (component mounting support 3351 1033 not included)

Item No.: 3351 1023



Component arm stainless steel, swiveling, incl. extendible I.V. Pole \varnothing 25 mm (component mounting support 3351 1033 not included)

Item No.: 3024 0014



I.V. Pole stainless steel \varnothing 25/18 mm, one-hand height adjustable 1,070 – 1,660 mm, 4 hooks, max. 2 kg/hook, glass and holder (component mounting support 3351 1033 and component holder not included)

Item No.: 3068 0000



Hand control holder for attachment onto an I.V. Pole \varnothing 25/18 mm, PVC

Item No.: 3351 1022

Medical device



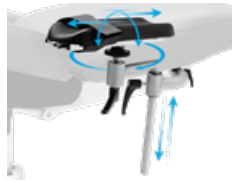
Instrument table *supportLine* height adjustable 735 – 1,000 mm

Item No.: 3351 0026



Side rails right and left, swiveling incl. locking, upholstered

Item No.: 3351 1036



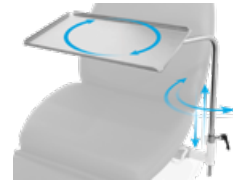
Anesthesia arm board with universal joint, with wrist secure straps

Item No.: 3078 0000



Norm rail 300 mm, seat part

Item No.: 3321 0000



Instrument table 500x300x15 mm, height adjustable, swiveling, detachable, incl. adapter (component mounting support 3351 1033 not included)

Item No.: 3065 0000



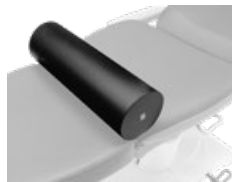
Foot protection foil

Item No.: 3326 0000



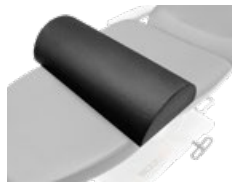
Trapeze cushion, wedge, for back/seat part

Item No.: 3022 0005



Knee roll round, 500x150 mm, PUD-coated

Item No.: 3050 0000



Knee half roll, 600x280x140 mm, PUD-coated

Item No.: 3019 0000



Body strap with Velcro straps, 2-piece

Item No.: 3083 0000



Inlay head pillow

Item No.: 3325 0000

Color card

skai® Tundra



High quality skai® material with fine calf leather grain and subdued matte-gloss-effect. The very extensive and trend-orientated color spectrum enables many applications and combinations.

Product Specification

- Long-lasting
- Tear resistant
- Easy to clean
- Abrasion resistant (DIN EN ISO 5470-2)
- Lightfast
- Disinfectant resistant
- Biocompatibility: cytotoxicity (EN ISO 10 993-5) and epicutaneous test (EN ISO 10 993-10)
- Blood- and urine resistant
- Phthalate-free
- Vegan

<i>eyeForce</i>	1800 0000
<i>500 XLE</i>	1500 0006
<i>500 XLE comfort</i>	1500 0006
	+ 3037 0080
<i>500 XLS</i>	1500 0005
<i>500 ECO</i>	1500 0008
<i>400 XL</i>	1400 0001
<i>surgiForce</i>	Formed seat 2600 0008
<i>surgiForce light</i>	Formed seat 2600 0009
<i>surgiLine</i>	Formed seat 2200 0008
<i>assistLine</i>	2400 0015
<i>motionLine</i>	1700 0000

+ Item No.: 3037 0...

weiß F6461198 Item No.:134	creme F6461210 Item No.:057	beige F6461636 Item No.:094	sand F6461230 Item No.:058	pistazio F6461610 Item No.:153	mint F6461495 Item No.:067	aqua F6461456 Item No.:001	türkis F6461338 Item No.:008
perle F6461288 Item No.:007	silber F6461550 Item No.:070	stone F6461608 Item No.:075	bleu F6461496 Item No.:068	dolphin F6461609 Item No.:076	sky F6461581 Item No.:073	royal F6461196 Item No.:051	atoll F6461453 Item No.:062
violett F6461356 Item No.:059	cyclame F6461381 Item No.:119	orchidee F6461354 Item No.:011	bordeaux F6461350 Item No.:010	kirsche F6461199 Item No.:054	feuer F6461454 Item No.:063	karneol F6461557 Item No.:072	orange F6461556 Item No.:071
apricot F6461458 Item No.:066	mais F6461457 Item No.:065	mango F6461607 Item No.:074	safran F6461542 Item No.:069	limonade F6461343 Item No.:009	limone F6461543 Item No.:109	smaragd F6461455 Item No.:064	agave F6461273 Item No.:006
chrom F6461205 Item No.:056	ocean F6461204 Item No.:055	schoko F6461357 Item No.:060	schwarz F6461195 Item No.:050	anthrazit F6461197 Item No.:052			

The colors displayed on your device may differ slightly from the original colors. If you wish to receive original color charts, please contact us at info@ufsk-osys.com.

Upgrade your OR to perfection.



eyeForce



500 XLE



500 XLE comfort



500 XLS



500 ECO



400 XL



motionLine



surgiForce



surgiForce light



surgiTrend



surgiLine



stayClean



stayClean roll



stayClean kick bucket



stayClean collector



assistTrend



assistPro F



assistPro H



easyPro F



easyLine F



easyLine R



assistLine



supportLine



CONTACT US

UFSK-International OSYS GmbH
Kirchhoffstraße 1
93055 Regensburg
Germany

Tel. +49 (0) 941 78862 15
Fax +49 (0) 941 78862 35
E-Mail info@ufsk-osys.com
Web ufsk-osys.com

MADE IN GERMANY
Design | Construction | Manufacturing